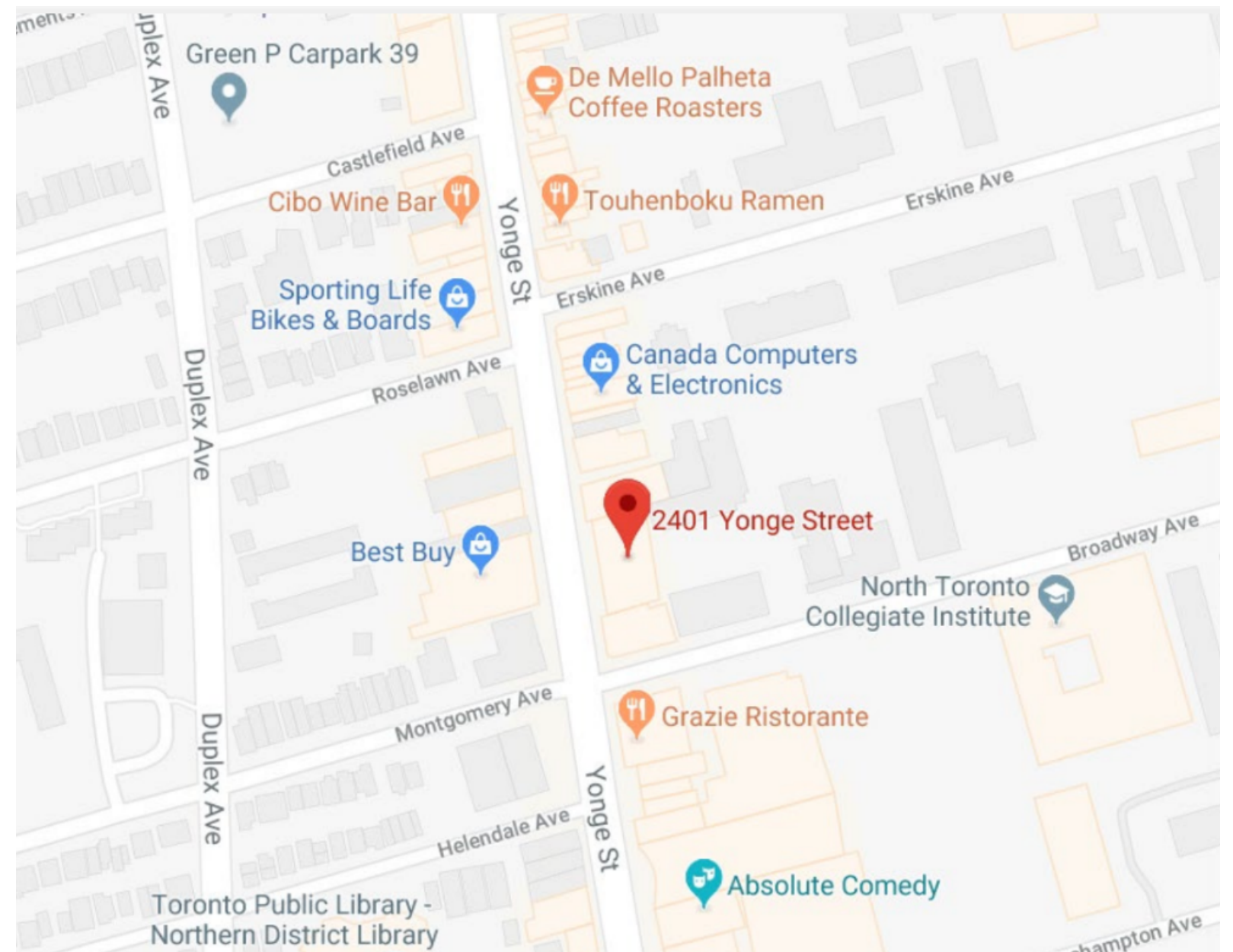




# NOW LEASING

Yonge St. & Eglinton Ave. E.

2401 Yonge Street, Toronto



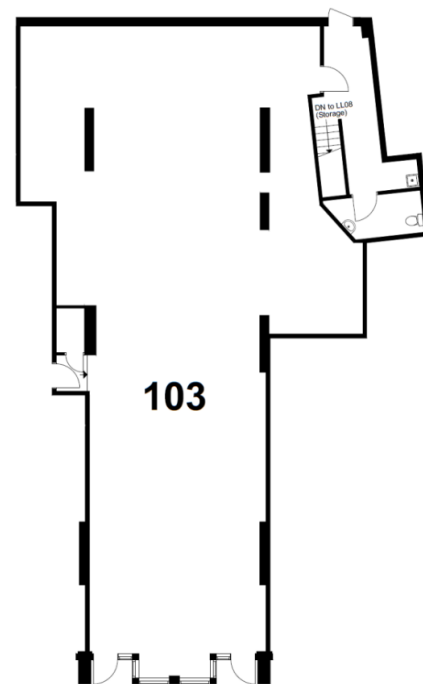
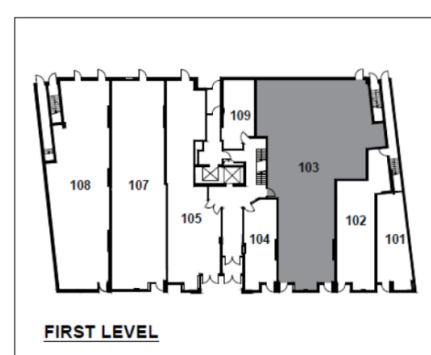
## PROPERTY SIZE DESCRIPTION

Unit 103 (2,926 SQ FT), Unit LL08 Storage (1,873 SQ FT)

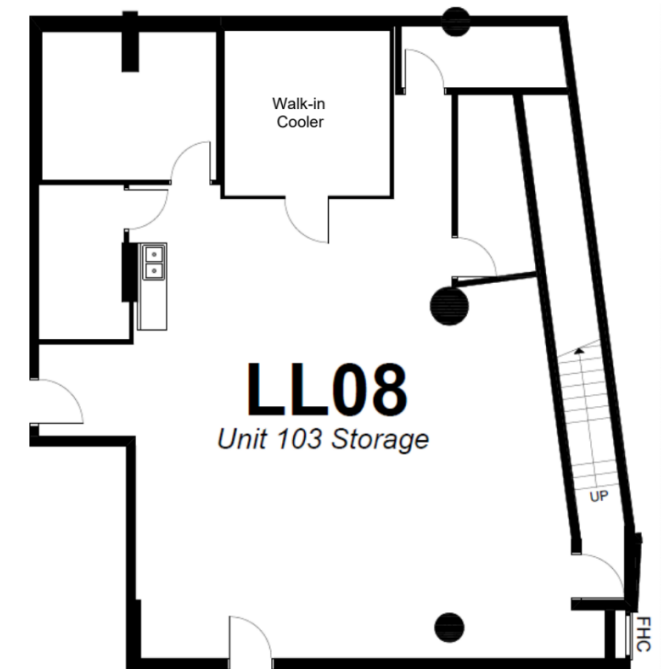
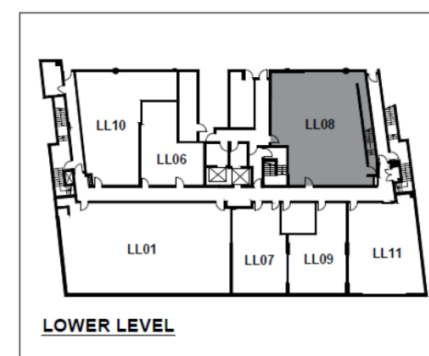
2401 Yonge St. is a high traffic 2 storey mixed use medical office and retail building located on the corner of Yonge Street and Broadway Ave in midtown Toronto – just one block north of Yonge and Eglinton. Property directly facing Yonge Street – steps from Eglinton subway station, restaurants, coffee shops and fresh food eateries. Ground floor retail with second floor medical offices. Property in the heart of a densely populated residential neighbourhood. Hub for current and future residential condominium development. Full service medical building providing a comprehensive mix of family physicians, pediatricians, dentists and support services such as pharmacy, diagnostic imaging and laboratory. The building features a two level underground public parking garage with ample parking for patients and monthly parkers.

## PLAN LAYOUT & SUITE PLAN

Yonge Eglinton Medical  
Suite 103 (2,926 SQ FT)



Yonge Eglinton Medical  
LL08- Unit 103 Storage (1,873 SQ FT)



For more information, please contact:

**Eddie Chan**

Commercial Specialist  
Real Estate Representative



(647) 281- 6109



eddie@downtowntoronto-realestate.com



downtowntoronto-realestate.com

Area Realty Inc. Brokerage- 650 College St. Toronto, M6G 1B7 (647) 281-6109

The information provided herein has been given to Area Realty by others and reliable sources. We do not warrant its accuracy. You are advised to independently verify the information prior to submitting an offer and to provide for sufficient due diligence in an offer. The information contained herein may change from time to time and the Property may be withdrawn from the market at anytime without notice.