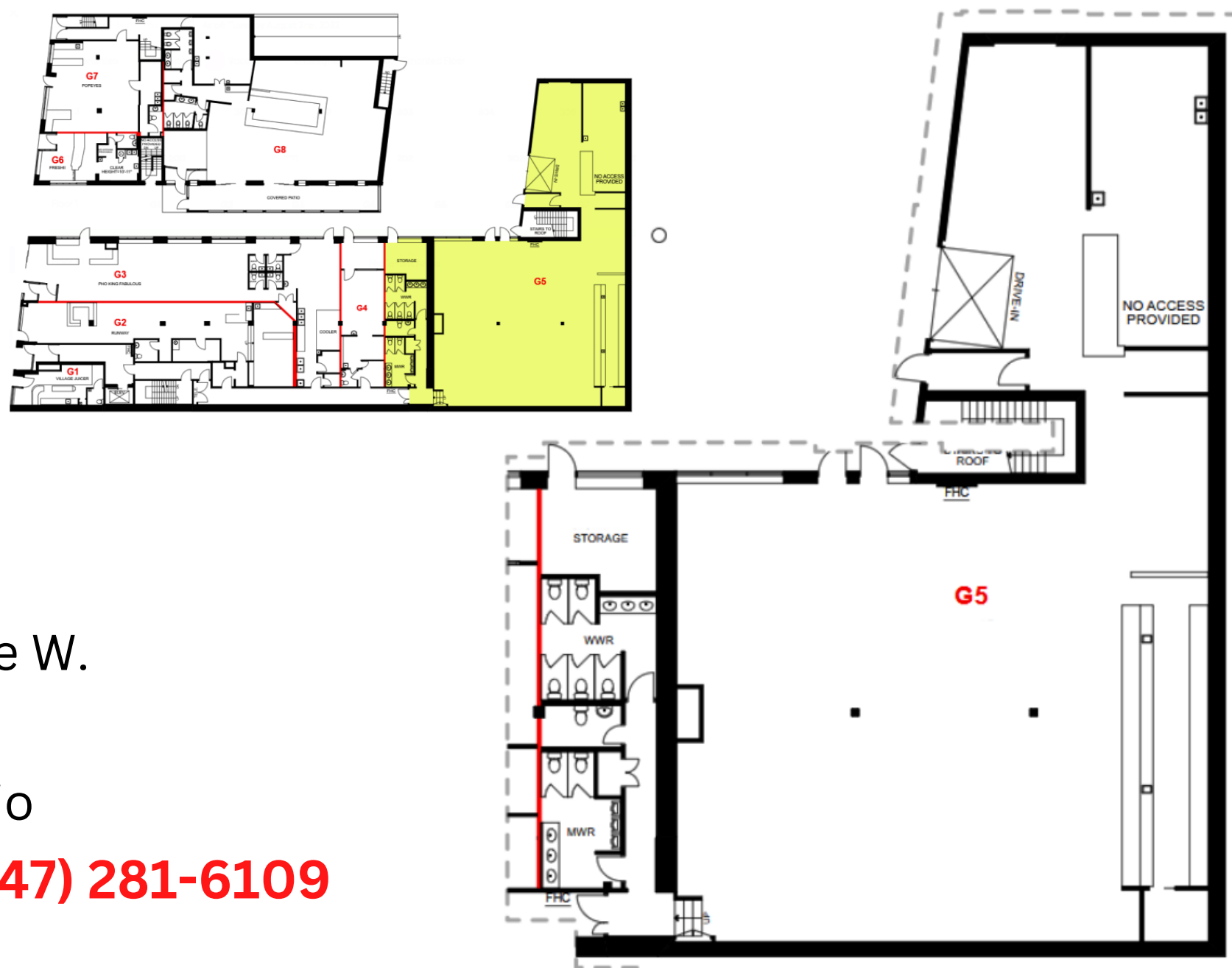
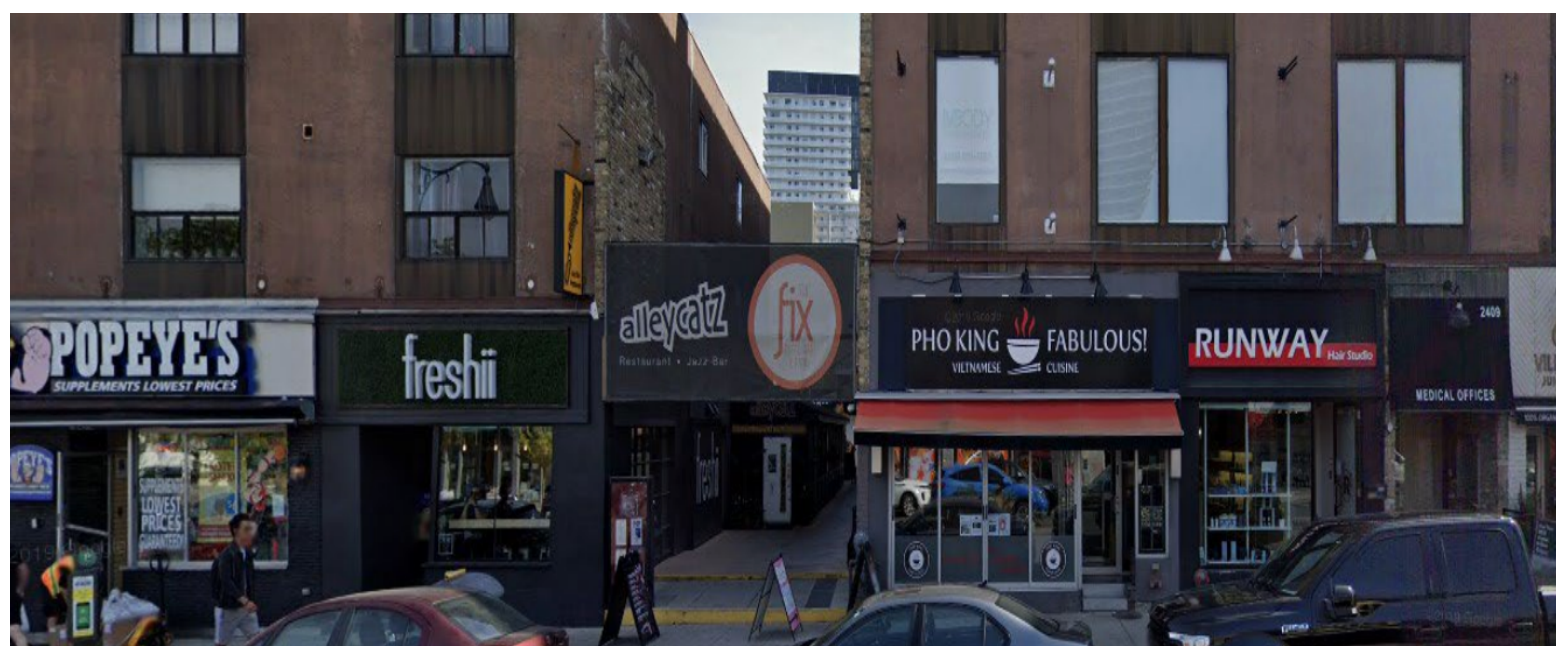
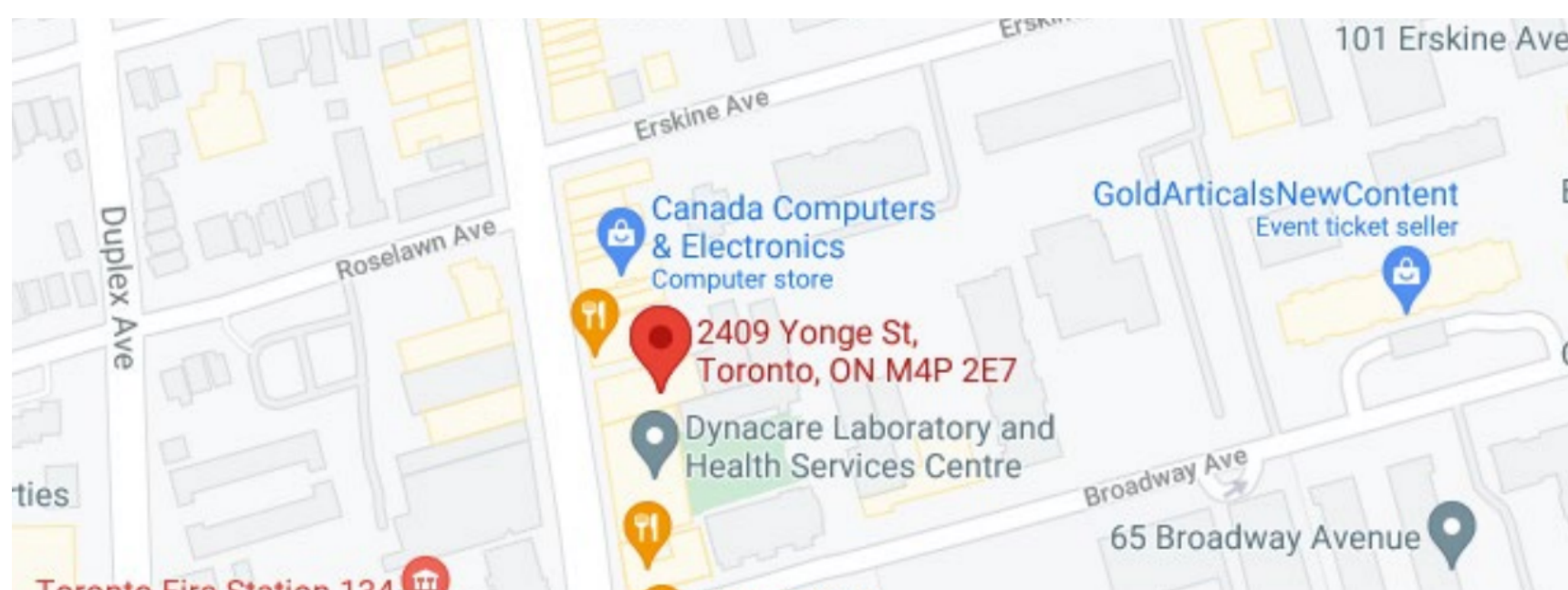




FOR LEASE

Yonge and Eglinton Ave. W.

2409 Yonge Street, Toronto



LOCATION: Yonge St. and Eglinton Avenue W.

SUITE INFO: G5 (the Fix)- **5,459 SQ FT**

PROPERTY TYPE: Restaurant and Bar with Patio

RATES: **CONTACT EDDIE CHAN (647) 281-6109**

DESCRIPTION:

A high traffic, 3 storey mixed use medical office and retail building located on the corner of Yonge St. and Erskine Ave. in midtown Toronto – just one block north of Yonge and Eglinton. Property directly facing Yonge St. – steps from Eglinton subway station, restaurants, coffee shops and fresh food eateries. Ground floor retail with upper floor medical offices. Property in the heart of a densely populated residential neighbourhood. Hub for current and future residential condominium development. Fully fixtured restaurant with large hood, wood burning pizza oven and LLBO. Underground tenant parking available. Patient parking conveniently located at 2401 Yonge St with ample parking situated on two underground parking levels.

For more information, please contact:

**我們專業團隊可提供
國，粵語服務！**

Eddie Chan

Commercial Specialist

Real Estate Representative

(647) 281- 6109

eddie@downtowntoronto-realestate.com

downtowntoronto-realestate.com



Area Realty Inc. Brokerage- 650 College St. Toronto, M6G 1B7 (647) 281-6109

The information provided herein has been given to Area Realty by others and reliable sources. We do not warrant its accuracy. You are advised to independently verify the information prior to submitting an offer and to provide for sufficient due diligence in an offer. The information contained herein may change from time to time and the Property may be withdrawn from the market at anytime without notice.